



# **Middle Georgia State University**

---

## **Drug-Free Schools and Campuses Act Biennial Review 2023-2024**

Conducted July 2024  
Submitted September 2024

## **Drug-Free Campus Task Force/Review Committee**

Jennifer Brannon ..... Vice President for Student Affairs  
Michael Stewart ..... Associate Vice President for Student Affairs  
Corey Guyton ..... Director of Student Engagement  
Carl Woods ..... Director for Recreation & Wellness  
Predita Howard..... Executive Director for Counseling & Accessibility Services  
Tripp Mitchell ..... Chief of Police  
Tiffany Leslie ..... Human Resource Generalist  
Jenia Bacote... ..... Chief Officer of Campus Culture & Community/Title IX Coordinator  
Christina Jackson ..... Executive Director for Housing and Residence Life  
Autumn Lucas... ..... Director of Student Health Services

## Table of Contents

Requirements of the Drug-Free Schools and Campus Regulations (DFSCR) .....	4
Compliance with Board of Regents Concerning Alcohol and Other Drug Policy .....	6
Middle Georgia State University Compliance.....	7
Statement of Program Goals and Evidence of Goal Achievement.....	11
Summary of Program Strengths and Weaknesses .....	16
Opportunities for Policy Revisions .....	18
Appendix A: Middle Georgia State University Drug Free Campus Policy .....	19
Appendix B: AlcoholEdu Results for 2023-2024 .....	23
Appendix C: Semesterly E-mail to Students .....	35
Appendix D: U.S. Department of Education. EDGAR Part 86, Drug-Free Schools and Campus Regulations Compliance Checklis.....	36

## **Introduction**

Middle Georgia State University is committed to providing a drug-free environment for all students and employees. In accordance with the Drug-Free Schools and Campuses Regulations (EDGAR Part 86), we have conducted a biennial review of our alcohol and other drug (AOD) programs and policies. This review covers the period from the academic year 2022-2023 through 2023-2024.

## **Requirements of the Drug-Free Schools and Campus Regulations (DFSCR)**

From U.S. Department of Education, EDGAR [34 e-CFR Part 86]

The institution of higher learning's (IHE) drug prevention program must, at a minimum, include the following:

1. The annual distribution in writing to each employee, and to each student who is taking one or more classes for any type of academic credit except for continuing education units, regardless of the length of the student's program of study, of
  - ◆ Standards of conduct that clearly prohibit, at a minimum, the unlawful possession, use, or distribution of illicit drugs and alcohol by students and employees on its property or as part of any of its activities.
  - ◆ A description of the applicable legal sanctions under local, state, or federal law for the unlawful possession or distribution of illicit drugs and alcohol.
  - ◆ A description of the health risks associated with the use of illicit drugs and the abuse of alcohol.
  - ◆ A description of any drug or alcohol counseling, treatment, rehabilitation or re- entry programs that are available to employees or students.
  - ◆ A clear statement that the IHE will impose disciplinary sanctions on students and employees (consistent with local, State, and Federal law), and a description of those sanctions, up to and including expulsion or termination of employment and referral for prosecution, for violations of the standards of conduct required by paragraph (a)(1) of this section. For this section, a disciplinary sanction may include the completion of an appropriate rehabilitation program.

2. A biennial review by the IHE of its program to:

- ◆ Determine its effectiveness and implement changes to the program if they are needed.
- ◆ Ensure that the disciplinary sanctions described in paragraph (a)(5) of this section are consistently enforced.

(Approved by the Office of Management and Budget under control number 1880-0522)  
(Authority: 20 U.S.C. 1145g)

## **Compliance with Board of Regents Concerning Alcohol and Other Drug Policy**

Middle Georgia State University is in compliance with the University System of Georgia Board of Regents Policy stated in Section 4 of the Policy Manual:

### **Board of Regents: [4.6.4 Alcohol and Drugs on Campus](#)**

In accordance with Georgia laws governing the manufacture, sale, use, distribution, and possession of alcoholic beverages, illegal drugs, marijuana, controlled substances, or dangerous drugs on college campuses and elsewhere, including the Drug-Free Postsecondary Education Act of 1990, the Board of Regents encourages its institutions to adopt programs designed to increase awareness of the dangers involved in the use of alcoholic beverages, marijuana, or other illegal or dangerous drugs by University System of Georgia (USG) students and employees. Such programs shall stress individual responsibility related to the use of alcohol and drugs on and off the campus.

To assist in the implementation of such awareness programs and to enhance the enforcement of state laws at USG institutions, each institution shall adopt and disseminate comprehensive rules and regulations consistent with local, state, and federal laws concerning the manufacture, distribution, sale, possession, or use of alcoholic beverages, marijuana, controlled substances, or dangerous drugs on campus and at institutionally approved events off campus.

Disciplinary sanctions for the violation of such rules and regulations shall be included as a part of each institution's disciplinary code of student conduct. Disciplinary sanctions for students convicted of a felony offense involving the manufacture, distribution, sale, possession, or use of marijuana, controlled substances, or other illegal or dangerous drugs shall include the forfeiture of academic credit and the temporary or permanent suspension or expulsion from the institution. All sanctions imposed by the institution shall be subject to review procedures authorized by the Board of Regents' Policy on Application for Discretionary Review.

The rules and regulations adopted by each institution shall also provide for relief from disciplinary sanctions previously imposed against one whose convictions are subsequently overturned on appeal or otherwise.

## **Middle Georgia State University Compliance**

Middle Georgia State University recognizes and supports present local, state, and federal laws and policies of the Board of Regents, with respect to the sale, use, distribution, and possession of alcoholic beverages and illegal drugs, as well as the Drug-Free Postsecondary Education Act of 1990 with respect to the manufacture, distribution, sale, possession, or use of marijuana, controlled substances, or dangerous drugs on college campuses and elsewhere.

The Middle Georgia State University Drug-Free Campus Policy, hereafter referred to as the Policy, was developed to address the requirements of the DFSCR. The Policy is clear in the expectation that all members of the University community must abide by local, state, and federal laws, including the DFSCR, regarding alcohol and other drugs. Also, the Policy includes specific language articulating the required standards of conduct, a description of the applicable legal sanctions, a description of health risks, a description of any drug or alcohol counseling, treatment, or rehabilitation or re-entry programs that are available to employees and students, and a clear statement that the institution will impose sanctions on students and employees for violations of the standards of conduct.

### **Standards of Conduct**

- ◆ State of Georgia Statutes (O.C.G.A 3-3-23) declare that it is unlawful for any person less than 21 years of age to possess or consume alcoholic beverages.
- ◆ It is unlawful to sell, give, serve, or permit to be served alcoholic beverages to a person less than 21 years of age. Furthermore, servers can be held civilly liable for damage caused by underage drinkers to whom they provided alcoholic beverages.
- ◆ It is unlawful to be under the influence of, use, possess, distribute, sell, offer, or agree to sell, or represent to sell narcotics, hallucinogens, dangerous drugs, or controlled substances, except as where permitted by prescription or law.
- ◆ Middle Georgia State University prohibits the possession, use, or distribution of drugs and alcohol by students and employees on the Middle Georgia State University campus or as any part of Middle Georgia State University's activities, whether on or off campus.

### **Middle Georgia State University Alcohol Policy**

- ◆ Middle Georgia State University expressly prohibits the use, possession, sale, or distribution of alcoholic beverages on campus by any campus constituency.
- ◆ Student activity funds or state funds may not be used for the purchase of alcoholic beverages.
- ◆ Middle Georgia State University is committed to recognizing, upholding, and enforcing the laws of the State of Georgia. Violation of those state laws, incorporated into the Middle Georgia State University Alcohol Policy, will not be condoned on the campus or at any activity held off campus by any constituency.
- ◆ Exceptions to the policy of no alcohol on campus may from time to time be permitted at the discretion of the President of Middle Georgia State University.

### **Student Organization Responsibility for Drug Abuse**

Official Code of Georgia Annotated Section 20-3-90 et seq., provides that any student organization functioning at any university system institution which knowingly permits or authorizes the sale, distribution, serving, possession, consumption, or use of marijuana, a controlled substance, or a dangerous drug when such sale, distribution, serving, possession, consumption, or use is not in compliance with the laws of this state shall have its recognition as a student organization withdrawn, shall be expelled from campus for a minimum of a calendar year from the year of determination of responsibility. The organization shall also be prohibited from the use of all property and facilities of the university system institution with which it is affiliated. These disciplinary actions are subject to administrative review and hearing procedures as are provided in the code.

### **Travel Policy**

Students should be aware that they are responsible for abiding by the Drug Free Campus Policy and that they may be held liable, both civilly and criminally, in the case that they are found in violation. When students travel, they should know that their point of destination is considered an extension of the campus. Violations occurring off campus will be treated the same as if the violations occurred on campus. All students participating in extra-curricular travel are required to complete the necessary travel forms prior to departure and return them to the office sponsoring the event. The student travel agreement form can be found [here](#).

### **Risks Associated with the Abuse of Alcohol and with Use of Illicit Drugs**

There are risks associated with alcohol and substance use and abuse. Information and resources are available online, the MGA health clinics, and other local and national organizations. The Centers for Disease Control and Prevention (CDC) provides information and resources regarding both [alcohol](#) and [drug](#) use. BeWell@MGA and Togetherall offer support on substance use.

### **Information on Alcohol and Drugs and Treatment Referral**

Middle Georgia State University has no drug and alcohol treatment or rehabilitation programs. A Behavioral Health Provider list with options for addiction treatment is available from the Counseling Center. Programs listed as representative referral sources should not be interpreted as an endorsement by the University. [BeWell@MGA](#) provides a 24/7 support line that provides licensed clinicians who offer in-the-moment support and risk assessment to students.

Georgia law (O.C.G.A. 20-1-23) mandates that any student of a public educational institution who is convicted of any felony offense involving the manufacture, distribution, sale, possession, or use of marijuana, a controlled substance, or a dangerous drug, shall, as of the date of conviction, be suspended from the public institution in which such person is enrolled. The suspension shall be effective as of the date of conviction for the remainder of the term. A convicted student would forfeit any right to any academic credit otherwise earned or earnable for such term. The only exception allowed is in cases where the institution has taken disciplinary action for the same offense prior to conviction.



### **University Disciplinary Sanctions for Alcohol/Drug Offenses**

Sanctions that may be imposed by Middle Georgia State University for violators of this Policy include the following or any combination thereof:

- ◆ Institutional Fines
- ◆ Educational Courses
- ◆ Reprimand
- ◆ Restrictions
- ◆ Probation
- ◆ Suspension
- ◆ Forced Withdrawal or Expulsion
- ◆ Referral

### **Common Offenses Typical Penalty - First Offense**

#### Alcohol Offenses and Legal Sanctions

- ◆ Possession of or attempt to purchase alcohol by a person under 21 years of age
  - \$300 fine, up to 3 years of probation, 20 hours of community service, up to 6 months in jail.
- ◆ DUI
  - 1st offense: No less than \$300 up to \$1,000 fine, 40 hours community service, jail 10 days to 12 months (all except 24 hours of jail time may be suspended or probated).
  - Over age 21: driver's license suspended for one year, may get limited driving permit (go to work and school) after DUI school in 120 days.
  - Under age 21: license revoked 6-12 months depending on blood alcohol level, no limited driving permit issued.
- ◆ Using a false driver's license, ID, or allowing someone to use your driver's license or ID
  - Up to \$1000.00 fine 12 months of probation, up to 12 months in jail.
- ◆ Providing alcohol to a person under age 21
  - \$1,000 fine, 12 months of probation, up to 12 months in jail.

#### Illicit Drug Offenses and Legal Sanctions

- ◆ Purchase/Possession of controlled substance
  - Felony: \$1,000 fine, 2 to 15 years in jail.
- ◆ Trafficking controlled substance (not marijuana)
  - Felony: \$100,000 to \$1 million fine, 5 to 15 years in jail.
- ◆ Possession of 1 ounce or less marijuana
  - Misdemeanor: Fine up to \$1,000, 12 months jail.
- ◆ Possession of more than 1 ounce marijuana
  - Felony: 1 – 10 years jail.
- ◆ Trafficking marijuana
  - Felony: Fine up to \$100,000; 1 to 5 years jail or probation.
- ◆ Trafficking marijuana to minor
  - Felony: Fine up to \$250,000; 2 to 20 years in jail.

The [Alcohol and Drug-Free Campus Policy 4.1.6.2](#) is included in the Middle Georgia State University [Student Handbook](#).

The Middle Georgia State University Student Code of Conduct, also included in the [Student Handbook](#), includes specific language relative to alcohol and other drugs under [Code of Conduct Violations](#) #11 and #12.

11. Use, possession, manufacturing, and/or distribution of substances or drugs controlled under federal or state law, including but not limited to marijuana, cocaine, methamphetamines, heroin, narcotics, or other controlled substances except as expressly permitted by law. Prohibited behaviors include, but are not limited to,
  - a. Possession or misuse of controlled substances.
  - b. Sale, manufacture, or distribution of controlled substances.
  - c. Possession of drug paraphernalia or any equipment that is used to produce, conceal, or consume illicit drugs including but not limited to: pipes (metal, wooden, acrylic, glass, stone, plastic, or ceramic), water pipes, roach clips, bongs, miniature spoons, syringes, and cocaine freebase kits.
  
12. Use, possession, manufacturing, and/or distribution of alcoholic (except as expressly permitted by University regulations and/or officials), or public intoxication. Prohibited behaviors include, but are not limited to, the following:
  - a. Underage possession of alcohol as alcohol may not in any circumstances be used by, possessed by, or distributed to any person under twenty-one (21) years of age.
  - b. Unauthorized possession of alcohol on campus, even when the person is of legal age to use or possess alcohol.
  - c. Intoxication that disrupts other individuals or any University activities or administrative responsibilities.
  - d. Aiding or abetting in the possession and/or consumption of alcohol by a person under twenty-one years of age.

The standards set forth by the Policy and the Student Code of Conduct are enforced by the Student Conduct Board as they are related to students. The Office of Human Resources enforces these standards as they relate to faculty and staff.

## STATEMENT OF PROGRAM GOALS AND EVIDENCE OF GOAL ACHIEVEMENT

It is the goal of the University to:

1. Promote positive decision-making by educating members of the University community on the consequences of alcohol and drug abuse. Evidence of goal achievement includes:
  - ◆ Provided access to prevention education programming efforts targeting all students through dissemination of material on alcohol and drug awareness in handbooks and online.
    - AlcoholEdu - an interactive online course designed to reduce the negative consequences of alcohol amongst students. This online training is provided by the University System of Georgia and is offered to all new MGA students.
    - Alcohol online self-assessment screening tool.
    - In partnership with Third Millenium Classrooms, and as a sanction of related student conduct violations, students may be required to complete one or more of the following interactive, online courses:
      - Under the Influence – A six-lesson course individualized for each student and integrating feedback through interaction. Students identify goals that will help them make a positive change in their personal alcohol use. The course includes a 30-day follow-up to measure changes in the student’s attitude and behavior.
      - Alcohol Wise - This online alcohol class is designed for incoming first-year or transfer students as an alcohol prevention education program. It can also be used as an intervention course; the study's findings were positive for college freshmen and sophomore alike, showing a statistically significant change in drinking behavior and attitudes among both groups. Alcohol Wise provides normative drinking information, harm reduction strategies, and alcohol education.
      - Alcohol Wise 21+ - Alcohol abuse prevention course for graduate, non-traditional, continuing education students.
      - Cannabis Wise - Designed for use with incoming first-year or transfer student for cannabis education and prevention, this relevant, engaging course informs students about the facts, risks, and consequences of using or distributing cannabis, whether they live in a state that's legalized it or not.
      - THC 101 – This course is for use with cannabis, possession of drug paraphernalia, or drugged driving violations. Public education about the dangers associated with cannabis use, presented in a reasonable and balanced

manner, is increasingly important to counteract public beliefs that cannabis use is harmless. Motivational enhancement therapy, or motivational interviewing, has been successful in helping inspire internally motivated change for individuals who use cannabis.

- Nicotine 101 – An online course that provides the necessary tools for students to make healthy choices about tobacco use. Nicotine 101 addresses the behaviors of those who use nicotine and provides valuable information on long-term use and adverse health effects including the dangers of vaping. Presented in a motivational interviewing style, the course empowers students to make their own decisions about nicotine use. It is valuable in aiding college campuses in enforcing new smoke- and tobacco-free policies as well as vaping, e-cigarette, or smoking violations.
  - Other Drugs – This substance abuse prevention course is for use with for use with for prescription drug or other illicit drug violations. To foster awareness of the consequences of prescription drug abuse, Other Drugs is an online intervention program for individuals charged with an alcohol or drug violation. Other Drugs focuses on prescription misuse, opiates, stimulants, and ecstasy.
  - Information related to referral and self-help organizations.
  - Specific information about methamphetamine and steroid abuse.
- ◆ Student Expos are held at the beginning of each fall semester and spring semester and are specifically designed to welcome new and returning students to the University.
  - ◆ All residence hall staff participate in annual training every August, which includes a review of the University’s alcohol and drug policy and sanctions. A refresher training is held every January. Residence Life Coordinators (RLCs) lead hall meetings and Resident Assistants (RAs) put on programs to educate residents on the danger and risk involved in drugs and alcohol use.
  - ◆ The Office of Recreation and Wellness, MGA Health Clinics, and/or the School of Health and Natural Sciences sponsor wellness fairs throughout the year.
  - ◆ New/Transfer Student Orientations are available in face-to-face session or online sessions and is mandatory at Middle Georgia State University. Information regarding the policies and the Student Code of Conduct is presented at all face-to-face sessions and is included in the online orientation.
  - ◆ The Middle Georgia State University [Student Handbook](#) includes policies can be accessed online.
    - [Residence Life Program](#)
    - [Student Code of Conduct](#)
    - [Alcohol and Drug-Free Campus Policy](#)

- ◆ The Middle Georgia State University Office of Legal Affairs and Compliance publishes an [Annual Security and Fire Safety Report](#) that outlines the Drug Free Campus Policy and provides alcohol and substance abuse information. Clery crime statistics are also listed within the report.
2. Provide pro-active and prevention programming sponsored by various University offices. Examples of these programs include: (list or provide short narrative on programming regarding alcohol and drugs)
- ◆ Residence Life:
    - **The Drunk Driving Experience – September 25, 2023** - Students experienced "driving drunk" by wearing drunk goggles and using a scooter to maneuver through cones. They will also learn about the dangers of driving while impaired and how to best avoid dangerous situations.
    - **Sip and Paint – October 17, 2023** - Students enjoyed the relaxation of painting on blank canvases while also sipping on mocktails. During the sip and paint the importance of alcohol awareness was also shared to these freshmen residents.
    - **Keep an Eye on Your Supply – October 30, 2023** - Anderson staff handed out candy to students while also teaching (with the help of the police officers) about the importance of drug awareness and how easy it is for someone to spike a drink or edible.
    - **Harris Hall Pub – March 11, 2024** - Students were able to gather in the Harris Hall lobby to enjoy mocktails, music, games, and food. The lobby was decorated to reflect St. Patrick's Day. They also were able to learn about the importance of alcohol and drug awareness.
    - **Drunk Driving Demo – March 12, 2024** - During this program, Information/statistics were given on drunk driving and how it can affect students' future and students were able to try the drunk goggles out under the Eastman campus police supervision.
    - **Mocktail Sip and Paint – March 27, 2024** - The mocktails represented alcohol and drug awareness. Students were able to pass the drunk goggles around to see their painting in a hallucination form.
    - **Drug and Alcohol Addiction – March 28, 2024** - Interactive game of jeopardy about Alcohol and Drug addiction and its harmful effects. The goal was to give students knowledge about the harmful effects of drugs to get them make healthy lifestyle choices.
    - **Drunk Goggle Sobriety Test – April 10, 2024** - Students were able to try to pass a multitude of sobriety tests and learn the importance of not drinking and driving.
  - ◆ Student Life: **Think Before You Drink program.** This program is designed to show students how alcohol affects the body, as well as teach them alternatives for having fun without alcohol. During this interactive program a trained police officer gives a presentation, students wear drunk goggles while completing an obstacle course, and they play an alcohol awareness trivia game.
  - ◆ Athletics: As part of the **Champions of Character program**, the men's and women's basketball team presented Shoot Hoops not Drugs program to the local elementary school. This program has been in place in athletics for over 10 years and educates students on the dangers of drug use and the importance of healthy choices.

- ◆ Counseling Services provides referrals to any students in need of alcohol, tobacco, and other drugs (ATOD) treatments (I.e., local mental health facilities and treatment centers). Counseling Services also partners with Recreation & Wellness on alcohol awareness events. Wellness events included an alcohol/substance abuse table with interactive goggles to highlight the dangers of impairment, coupled with MGA Health Clinic providing verbal education and printed materials.
  - ◆ University Police works closely with Residence Life and Student Life to create educational presentations as needed on topics relating to drugs and alcohol. Police Officers conduct training at mandatory Residences Life meetings at the beginning of each semester as well as provided the following programs that may include the participation with the Middle Georgia Traffic Enforcement Network (MGTEN), Alcohol & Drug training, Internet & Social Media Safety, Women's Self Defense Course (RAD) twice annually.
  - ◆ Student Health Services/MGA Health Clinic:
    - **Narcan Training Session** for MGA faculty/staff via online/Teams. This session was presented On March 8, 2023, by the Overdose Surveillance & Planning Specialist, Department of Public Health.
    - The **Fall Health Fair** in Macon on September 20, 2023, included Opioid and Drug Overdose Awareness/Narcan training and was sponsored by the Department of Public Health and Macon.
    - The **Fall Health Fair** in Warner Robins on September 21, 2023, included Opioid and Drug Overdose Awareness/Narcan training sponsored by the Department of Public Health.
    - **Spring Health Fair** in Dublin on March 14, 2024, included an "impairment goggles" station with resources for alcohol/substance use.
    - **Health fairs** in Fall 2024 and Spring 2025 will also feature Opioid and Drug Overdose Awareness/Narcan training, sponsored by the Department of Public Health.
  - ◆ Human Resources - The health insurance plans available to employees include coverage for substance abuse. [Acentra](#) help/referral line: 1-844-243-4440 call 24/7. Student insurance, [SHIP](#), information is available online.
3. Provide members of the campus community with healthy alternatives to social activities involving alcohol and other drugs.
- ◆ All activities of the Offices of Student Life, Housing & Residence Life and Campus Culture & Community are alcohol and drug free and provide opportunities for participants to enjoy healthy entertainment and educational activities in a safe environment.
  - ◆ [Student Travel documentation](#) has been revised requiring students to acknowledge their understanding of the Drug-Free Campus Policy.

4. Provide support and referral resources for individuals who have concerns about their behavior related to alcohol and other drugs.
  - ◆ Health Clinic – student health professionals are available to members of the University community to provide information and referrals for alcohol and other drug concerns/abuse/prevention. The patient intake form includes questions related to use of alcohol and other drugs for appropriate follow-up and/or referral by nurse practitioners.
  - ◆ The Counseling Center Assessment of Psychological Symptoms (CCAPS) assessment tool includes screening for psychological symptoms, alcohol, and other drug usage. All students served by the Counseling Services participate in the assessment at intake.
  - ◆ Various commercial publications, pamphlets and brochures are published and/or distributed by the Counseling Center, and the Health Clinic.
5. Determine the effectiveness of the Policy and implement changes if needed.
  - ◆ The institution’s Drug-Free Campus Task Force / Review Committee and the Division of Student Affairs review policies annually and make recommendations. The administration of Middle Georgia State University reserves the right to modify the policies as indicated in this Biennial Review.
6. Use Sanctions and Research Protocol.
  - ◆ Sanctions are clearly articulated in the Policy.
    - During the 2022-23 review period, there were **108** alleged drug/alcohol conduct violations involving students at MGA. In fifteen (**15**) of those cases, the student accepted responsibility for the violation and accepted the appropriate sanction(s), including but not limited to, fines, alcohol or drug education courses, a period of student conduct probation, and parental notification, when warranted. Based on further investigation, violations related to the remaining **93** cases were determined to lack credible evidence or indicated the student had not violated the Code of Conduct. All students were reminded of the Student Code of Conduct and institutional expectations related to alcohol and drugs on-campus.
    - During the 2023-24 review period, there were **159** alleged drug/alcohol conduct violations involving students at MGA. In eighty (**80**) of those cases, the student accepted responsibility for the violation and accepted the appropriate sanction(s), including but not limited to, fines, alcohol or drug education courses, a period of student conduct probation, and parental notification, when warranted. Based on further investigation, violations related to the remaining **79** cases were determined to lack credible evidence or indicated the student had not violated the Code of Conduct. All students were reminded of the Student Code of Conduct and institutional expectations related to alcohol and drugs on-campus.
      - The increase in the number of students accepting responsibility may be attributed to the addition of a student conduct coordinator, a renewed partnership with Housing and Residence Life and the Area Coordinator, and increased training on how and what to report.

## SUMMARY OF PROGRAM STRENGTHS AND WEAKNESSES

Middle Georgia State University has approximately 8000 students consisting of traditional, non-traditional, online, residential, and intercollegiate athletes.

### PROGRAM STRENGTHS:

- ◆ The University has a strong Policy.
- ◆ The Policy is readily available online in electronic format. The [Student Handbook](#) includes the Student Code of Conduct and the Alcohol and Drug-Free Campus Policy.
- ◆ A link to the policy and other resources is emailed at the start of each term to students via the student e-mail system. All students are provided a free student e-mail account at the time of initial registration. Student e-mail is an official means of communication at Middle Georgia State University. Students are responsible for the information presented to them via the student e-mail account. See Appendix C.
- ◆ The University encourages campus-wide involvement in alcohol and other drug education and prevention programs. The University System of Georgia's AlcoholEdu course that is offered to all new students shows the institution's commitment to the Policy. The Offices of Student Affairs, Academic Affairs, Fiscal Affairs, and External Affairs work together to accomplish programmatic goals.
- ◆ Programs are collaborative, proactive and student focused.
- ◆ On-demand virtual Narcan training is available for MGA employees from the Department of Public Health's overdose surveillance and planning specialist. In-person training is also available during campus health fairs, open to all members of the MGA community.
- ◆ Rates for fines for drug and alcohol offenses are reviewed periodically to determine if a higher fine may prove to be a deterrent. These fines are used to purchase additional lessons with Third Millennium and may also be used, upon request, for educational equipment and programming.
- ◆ Student Affairs documents contact with parents of underage students repeatedly charged with possession of alcohol and/or drug offenses through the student conduct process.
- ◆ The [Assessment and Care Team](#) (ACT) is dedicated to a proactive, coordinated, and planned approach to the early identification, assessment, management, reduction, and prevention of behavioral concerns that have the potential to negatively impact the safety and well-being of Middle Georgia State University students, faculty, staff, and visitors.



- ◆ [BeWell@MGA](mailto:BeWell@MGA) gives students 24/7 access to counselors and mental health resources to help them cope - from minor issues to major concerns. Students have free immediate access to teletherapy through our partnership with Uwill. If you or someone you know is experiencing a mental health crisis, call 833-646-1526 for help 24/7/365 **\*for a medical emergency, call 911\***.
- ◆ The faculty is supportive of the Student Code of Conduct and the Policy. In fact, faculty members place a prepared statement encouraging students to read, understand, and abide by the Student Code of Conduct in their syllabi.
- ◆ The Task Force will continue to monitor progress and make suggestions for improvement for the next biennial review.
- ◆ As noted on page 10 of this Review, the MGA Student Code of Conduct was reviewed and updated, specifically related to the language and alleged violations related to alcohol and illegal substances. Language was changed from "illegal substances" to "controlled substances" and now specifically mentions cocaine and methamphetamines in the list of possible controlled substances. It also more clearly defines what is meant by the term "drug paraphernalia". Related to alcohol, an additional violation was added related to "Aiding or abetting in the possession and/or consumption of alcohol by a person under twenty-one years of age."
- ◆ Renewed collaboration and communication between Student Conduct and Housing and Residence Life has helped to strengthen consistency in reporting cases of alleged alcohol or drug use in the residence halls.

#### **PROGRAM WEAKNESSES:**

- ◆ There is a lack of coordinated institutional effort and/or involvement in planning activities for the National Alcohol Awareness Week, to include an awareness of institutional policies and sanctions related to alcohol use and possession.
- ◆ Office of Title IX should increase collaboration with other units to improve new student completion rates of AlcoholEdu.

Action Plan: During 2023-24, the Office of Title IX collaborated with the Office of Student Life to provide a prize incentive for students to complete the AlcoholEdu course. Title IX also worked with The Office of Housing & Residence Life to obtain a list of newly enrolled residential students to offer the training. Moving forward, the Office of Title IX will continue to partner with other units to provide prize incentives as well as continue to obtain the list of newly enrolled residential students from The Office of Housing & Residence Life.

- ◆ Information contained within policy should reference research and available statistics. (Risks associated with Alcohol Abuse and Illicit Drug Use).

## **OPPORTUNITIES FOR POLICY REVISIONS:**

Based on the foregoing review, and the information collected during the process, the following recommendation is proposed by the Task Force.

- ◆ The Policy should be thoroughly reviewed and updated, editorial changes implemented, references included and approved through governance process.

## **OPPORTUNITIES FOR IMPROVEMENTS:**

- ◆ Collaborate with Academic Affairs, now equipped with a dedicated Director of First-Year Experience, to assess the need for an alcohol and drug education unit within the first-year experience program.
- ◆ Coordinate efforts to celebrate National Collegiate Alcohol Awareness Week, Public Safety Week, Wellness Week and others with various campus and community stakeholders in summer academic year programming meeting. Targeting residential campuses is important.
- ◆ Provide opportunities for student leaders (iLEAD, SGA, Athletes, Greeks) and staff members with desire to expand their skills, experience and knowledge is organizing and leading experiences to expand programming efforts.
- ◆ Build upon the existing Greek Life and Athletics hazing and alcohol policies and programs by expanding these initiatives to include other student organizations, ensuring comprehensive coverage across all student groups.
- ◆ The Drug-Free Campus Task Force could meet at least once per academic year to review policy, progress towards goals, best practices, and propose policy revision.

## **SUMMARY**

Middle Georgia State University's values of stewardship, engagement, adaptability, and learning that tie directly into the planning for alcohol and drug prevention education efforts. Wellness and prevention are highlighted through programming and initiatives at the institution throughout multiple divisions and departments.

## APPENDIX A

### MIDDLE GEORGIA STATE UNIVERSITY 2023-2024 DRUG-FREE CAMPUS POLICY

#### ALCOHOL & DRUG-FREE CAMPUS POLICY

##### *Middle Georgia State University is an Alcohol and Other Drugs-Free Campus*

Middle Georgia State University recognizes and supports local, state, and federal laws and policies of [the Board of Regents Policy 4.6.4](#), with respect to the sale, use, distribution, and possession of alcoholic beverages and illegal drugs, as well as the Drug-Free Postsecondary Education Act of 1990 with respect to the manufacture, distribution, sale, possession, or use of marijuana, controlled substances, or dangerous drugs on college campuses and elsewhere.

##### Standards of Conduct

- ◆ State of Georgia Statutes declare that it is unlawful for any person less than 21 years of age to possess or consume alcoholic beverages.
- ◆ It is unlawful to sell, give, serve, or permit to be served alcoholic beverages to a person less than 21 years of age. Furthermore, servers can be held civilly liable for damage caused by underage drinkers to whom they provided alcoholic beverages.
- ◆ It is unlawful to be under the influence of, use, possess, distribute, sell, offer, or agree to sell, or represent to sell narcotics, hallucinogens, dangerous drugs, or controlled substances, except as where permitted by prescription or law.
- ◆ To receive federal student aid, a student must not have a drug conviction for an offense that occurred while they were receiving federal student aid (such as grants, loans, or work-study).

##### Alcohol Policy

Middle Georgia State University expressly prohibits the use, possession, sale or distribution of alcoholic beverages on campus by any campus constituency. Student activity funds or state funds may not be used for the purchase of alcoholic beverages. Middle Georgia State University is committed to recognizing, upholding and enforcing the laws of the State of Georgia. Violation of those state laws, incorporated into the Middle Georgia State University Alcohol and Drug-Free Campus Policy, will not be condoned on the campus or at any activity held off campus by any constituency. Exceptions to the policy of no alcohol on campus may from time to time be permitted at the discretion of the President of Middle Georgia State University.

##### Drug Policy

Middle Georgia State University prohibits the possession, use, or distribution of drugs and alcohol by students and employees on the Middle Georgia State University campus or as any part of Middle Georgia State University's activities, whether on or off campus. Middle Georgia State University is committed to recognizing, upholding and enforcing the laws of the State of Georgia. Violation of those state laws, incorporated into the Middle Georgia State University Alcohol and Drug-Free Campus Policy, will not be condoned on the campus or at any activity held off campus by any constituency.

### **Student Organization Responsibility for Drug Abuse**

Official Code of Georgia Annotated Section 20-3-90 et seq., provides that any student organization functioning at any university system institution which knowingly permits or authorizes the sale, distribution, serving, possession, consumption, or use of marijuana, a controlled substance, or a dangerous drug when such sale, distribution, serving, possession, consumption, or use is not in compliance with the laws of this state shall have its recognition as a student organization withdrawn, shall be expelled from campus for a minimum of a calendar year from the year of determination of guilt. The organization shall also be prohibited from the use of all property and facilities of the university system institution with which it is affiliated. These disciplinary actions are subject to administrative review and hearing procedures as are provided in the code.

### **Travel Policy**

Students should be aware that they are responsible for abiding by the Drug-Free Campus Policy and that they may be held liable, both civilly and criminally, in the case that they are found in violation. When students travel, they should know that their point of destination is considered an extension of the campus. Violations occurring off campus will be treated the same as if the violations occurred on campus.

All students participating in extra-curricular travel are required to complete the necessary travel forms prior to departure and return them to the office sponsoring the event.

### **Risks Associated with Alcohol Abuse and Illicit Drug Use**

The inappropriate or excessive use of alcohol and other drugs are associated with a variety of personal health risks, and risks to others. Alcohol consumption causes a number of marked changes in behavior. Even low doses significantly impair the judgment and coordination required to drive a car safely, increasing the likelihood that the driver will be involved in an accident. Moderate doses of alcohol may increase the incidence of a variety of aggressive acts, including murder, rape, armed robbery, vandalism, spouse and child abuse, and drunk driving. High doses of alcohol often cause marked impairment in higher mental function, severely altering a person's ability to learn and remember information and make judgments. Heavy use may cause chronic depression and suicide and is also greatly associated with the abuse of other drugs. Very high doses cause respiratory depression and death. If combined with other depressants of the central nervous system, much lower doses of alcohol will produce the effects described. The use of even small amounts of alcohol by a pregnant woman can damage her fetus.

Long-term heavy alcohol use can cause digestive disorders, cirrhosis of the liver, circulatory system disorders, and impairment of the central nervous system, all of which can lead to dependence, particularly in person with one or more parents or grandparents who were problem drinkers. At least 15-20 percent of heavy users will eventually become problem drinkers or alcoholics if they continue drinking. Sudden cessation of alcohol intake by alcoholics is likely to produce withdrawal symptoms, including severe anxiety, tremors, hallucinations, or convulsions, which can be life threatening.

Use of Illicit Drugs interferes with the brain's ability to take in, sort and synthesize information. They distort perception, which can lead users to harm themselves or others. Drug use also affects

sensation and impairs memory. Illicit drugs all have some health-threatening qualities, some more than others. Examples are lung damage from marijuana, central nervous system disorders for cocaine, heroin, and hallucinogens, and liver damage from inhalants. Dependence and addiction are constant threats to users. HIV is widely spread among intravenous drug users. Regular abuse of these substances generally exposes users to criminal elements who may influence users to become involved in criminal activities in addition to their already illegal drug use.

### **Information on Alcohol and Drugs and Treatment Referral**

Middle Georgia State University has no drug and alcohol treatment or rehabilitation programs. A Behavioral Health Provider list with options for addiction treatment is available from the Counseling Center (478) 471-2985 on the Macon Campus and (478) 934-3092 on the Cochran Campus. Programs listed as representative referral sources should not be interpreted as an endorsement by the University.

### **Suspension from Public Institution for Convicted Drug Offenders**

Georgia law (see O.C.G.A. §20-1-23) mandates that any student of a public educational institution who is convicted of any felony offense involving the manufacture, distribution, sale, possession, or use of marijuana, a controlled substance, or a dangerous drug, shall, as of the date of conviction, be suspended from the public institution in which such person is enrolled. The suspension shall be effective as of the date of conviction for the remainder of the term. A convicted student would forfeit any right to any academic credit otherwise earned or earnable for such term. The only exception allowed is in cases where the institution has taken student conduct action for the same offense prior to conviction.

### **Student Conduct Sanctions for Alcohol/Drug Offenses**

Sanctions that may be imposed by Middle Georgia State University for violators of this Policy include the following or any combination thereof: Reprimand; Restrictions; Probation; Suspension; Forced withdrawal or expulsion; Referral or Monetary fine.

**Legal Sanctions – Alcohol Offenses**

Common Alcohol Offenses	Typical Penalty – First Offense
Possession of or attempt to purchase alcohol by a person under 21 years of age	\$300 fine, up to three years' probation, 20 hours of community service, up to 6 months in jail
DUI	1st offense: \$750 - \$1,000 fine, 40 hours community service, jail 10 days to 12 months (all except 24 hours of jail time may be suspended or probated) Over age 21: driver's license suspended for one year, may get limited driving permit (go to work and school) after DUI school in 120 days Under age 21: license revoked 6-12 months depending on blood alcohol level, no limited driving permit issued
Using a false driver's license, ID, or allowing someone to use your driver's license or ID	\$100 - \$200 fine, \$100 - \$200 fine, 12 months' probation, up to 12 months in jail
Providing alcohol to a person under age 21	\$1000 fine

**Legal Sanctions – Illicit Drug Offenses**

Common Drug Offenses	Typical Penalty – First Offense
Purchase/Possession of controlled substance	Felony: \$1000 fine
Trafficking controlled substance (not marijuana)	Felony: \$100,000 to \$1 million fine
Possession of 1 ounce or less marijuana	Misdemeanor: Fine up to \$1,000; 12 months jail
Possession of more than 1 ounce marijuana	Felony: 1 – 10 years jail
Trafficking marijuana	Felony: Fines from \$100,000 to \$1,000,000; 5 to 15 years jail or probation
Trafficking marijuana to minor	Felony: Fine up to \$250,000; 2 to 20 years in jail

**Eligibility For Federal Financial Aid**

Higher Education Act Amendment (October 1998) Section 484

Section 484, *Student Eligibility*, is amended to authorize the suspension of a student's federal loan eligibility if he or she has been convicted of a drug-related offense. The section states that a student who has been convicted of any offense under any federal or state law involving the possession or sale of a controlled substance shall not be eligible to receive any grant, loan, or work assistance under this title during the period beginning on the date of such conviction and ending after the interval specified in the following table:

Student Ineligibility for Grants, Loans, or Work Assistance	
For possession of a controlled substance, ineligibility period is:	For sale of a controlled substance, ineligibility period is:
First Conviction            1 year	First Conviction            2 years
Second Conviction        2 years	Second Conviction        Indefinite
Third Conviction           Indefinite	

**APPENDIX B**  
**AlcoholEdu Results for Academic Year 2023-2024**

*Due to the limited number of students who completed the follow-up survey, an Impact Report for 2023-24 is not available to protect the anonymity of the students who completed the follow-up survey per Vector Solutions data policy. However, the following results below reflect the pre-course and post-course survey responses on student behavior regarding alcohol and other substances.*

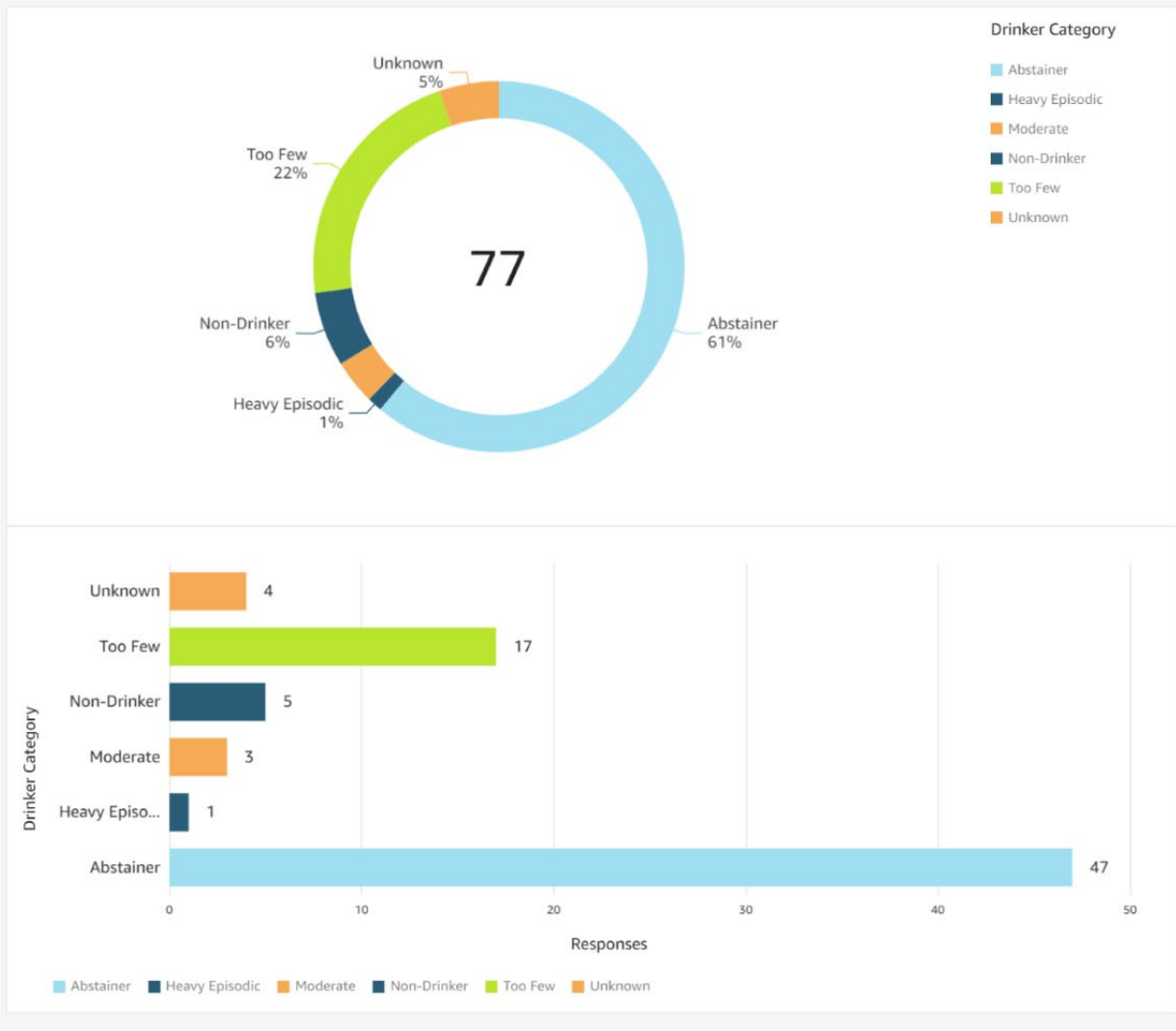
# AlcoholEdu

Results of the Pre-course and Post-course Surveys  
for AY2023-2024

Course	Survey	Learners
AlcoholEdu for College	AlcoholEdu for College Post-Course Survey	44
AlcoholEdu for College	AlcoholEdu for College Pre-Course Survey	60

## Drinker Category Overview

\* Courses with fewer than 20 responses are categorized "Too Few" to preserve anonymity





# AlcoholEdu

MGA Student Results of the Pre-course and Post-course Surveys for AY2023-2024

Views and Behavior with Alcohol & Drugs



## Pre-course Survey Results

### Pre-Course Survey Results -1

#### Survey Question Details

\*Survey response data with fewer than 20 learners is hidden to preserve anonymity.

Survey Details	Section	Question	Answer	Benchmark	Responses	% of Responses
<input type="checkbox"/> Course: AlcoholEdu for College  <input type="checkbox"/> Survey: AlcoholEdu for College Pre-Course Survey	<input type="checkbox"/> Active Recovery	<input type="checkbox"/> Are you in active recovery from a substance use disorder (addiction)?	<input type="checkbox"/> Yes	My Organization	0	0.0%
			<input type="checkbox"/> No	My Organization	55	98.2%
			<input type="checkbox"/> Prefer not to answer	My Organization	1	1.8%
	<input type="checkbox"/> Consumed Alcohol - Past Year	<input type="checkbox"/> During the past year, have you consumed alcohol (i.e., had more than a few sips of beer, wine, or liquor)?	<input type="checkbox"/> No Answer	My Organization	4	
			<input type="checkbox"/> Yes	My Organization	9	16.1%
			<input type="checkbox"/> No	My Organization	47	83.9%
	<input type="checkbox"/> Current Situation	<input type="checkbox"/> Select the answer that most closely matches how you feel.	<input type="checkbox"/> No Answer	My Organization	4	
			<input type="checkbox"/> I see no need to change the...	My Organization	6	66.7%
			<input type="checkbox"/> I am thinking about drinki...	My Organization	2	22.2%
			<input type="checkbox"/> I am ready to try drinking ...	My Organization	0	0.0%
			<input type="checkbox"/> I am currently trying to dri...	My Organization	1	11.1%
			<input type="checkbox"/> No Answer	My Organization	51	
			<input type="checkbox"/> Not important	My Organization	5	55.6%
	<input type="checkbox"/> When you drink alcoholic beverages, how important to you is each of the following reasons?	<input type="checkbox"/> To get drunk	<input type="checkbox"/> Mostly not important	My Organization	0	0.0%
			<input type="checkbox"/> Neutral	My Organization	1	11.1%
			<input type="checkbox"/> Important	My Organization	3	33.3%
<input type="checkbox"/> Very important			My Organization	0	0.0%	
<input type="checkbox"/> No Answer			My Organization	51		

# AlcoholEdu

MGA Student Results of the Pre-course and Post-course Surveys for AY2023-2024

Views and Behavior with Alcohol & Drugs



## Pre-Course Survey Results - 2

### Survey Question Details

*\*Survey response data with fewer than 20 learners is hidden to preserve anonymity.*

Survey Details	Section	Question	Answer	Benchmark	Responses	% of Responses
	When you drink alcoholic beverages, how important to you is each of the following reasons?	To celebrate	Not important	My Organization	1	11.1%
			Mostly not important	My Organization	0	0.0%
			Neutral	My Organization	1	11.1%
			Important	My Organization	7	77.8%
			Very important	My Organization	0	0.0%
			No Answer	My Organization	51	
	When you drink alcoholic beverages, how important to you is each of the following reasons?	To relieve stress	Not important	My Organization	5	55.6%
			Mostly not important	My Organization	2	22.2%
			Neutral	My Organization	1	11.1%
			Important	My Organization	1	11.1%
			Very important	My Organization	0	0.0%
			No Answer	My Organization	51	
	When you drink alcoholic beverages, how important to you is each of the following reasons?	To experiment	Not important	My Organization	3	33.3%
			Mostly not important	My Organization	2	22.2%
			Neutral	My Organization	0	0.0%
			Important	My Organization	3	33.3%
			Very important	My Organization	1	11.1%
			No Answer	My Organization	51	
	When you drink alcoholic beverages, how important to you is each of the following reasons?	Because you like the taste	Not important	My Organization	2	22.2%
			Mostly not important	My Organization	0	0.0%
			Neutral	My Organization	2	22.2%
			Important	My Organization	2	22.2%
			Very important	My Organization	3	33.3%
			No Answer	My Organization	51	
	When you drink alcoholic beverages, how important to you is each of the following reasons?	To have a good time with your friends	Not important	My Organization	3	33.3%
			Mostly not important	My Organization	1	11.1%
			Neutral	My Organization	0	0.0%
			Important	My Organization	2	22.2%
			Very important	My Organization	3	33.3%
			No Answer	My Organization	51	
	When you drink alcoholic beverages, how important to you is each of the following reasons?	To have a good time with members of your organization	Not important	My Organization	3	33.3%
			Mostly not important	My Organization	1	11.1%
			Neutral	My Organization	4	44.4%
			Important	My Organization	1	11.1%
			Very important	My Organization	0	0.0%
			No Answer	My Organization	51	

# AlcoholEdu

MGA Student Results of the Pre-course and Post-course Surveys for AY2023-2024

Views and Behavior with Alcohol & Drugs



## Pre-Course Survey Results - 3

### Survey Question Details

\*Survey response data with fewer than 20 learners is hidden to preserve anonymity.

Survey Details	Section	Question	Answer	Benchmark	Responses	% of Responses
	When you drink alcoholic beverages, how important to you is each of the following reasons?	To decrease inhibitions	Not important	My Organization	5	55.6%
			Mostly not important	My Organization	4	44.4%
			Neutral	My Organization	0	0.0%
			Important	My Organization	0	0.0%
			Very important	My Organization	0	0.0%
			No Answer	My Organization	51	
	When you drink alcoholic beverages, how important to you is each of the following reasons?	To feel happy	Not important	My Organization	5	55.6%
			Mostly not important	My Organization	3	33.3%
			Neutral	My Organization	1	11.1%
			Important	My Organization	0	0.0%
			Very important	My Organization	0	0.0%
			No Answer	My Organization	51	
	When you drink alcoholic beverages, how important to you is each of the following reasons?	To feel more attractive	Not important	My Organization	7	77.8%
			Mostly not important	My Organization	2	22.2%
			Neutral	My Organization	0	0.0%
Important			My Organization	0	0.0%	
Very important			My Organization	0	0.0%	
		No Answer	My Organization	51		

Survey Details	Section	Question	Answer	Benchmark	Responses	% of Responses
	When you drink alcoholic beverages, how important to you is each of the following reasons?	Maintain your organization's image	Not important	My Organization	8	88.9%
			Mostly not important	My Organization	1	11.1%
			Neutral	My Organization	0	0.0%
			Important	My Organization	0	0.0%
			Very important	My Organization	0	0.0%
			No Answer	My Organization	51	
	When you drink alcoholic beverages, how important to you is each of the following reasons?	To feel more confident or sure of yourself	Not important	My Organization	8	88.9%
			Mostly not important	My Organization	1	11.1%
			Neutral	My Organization	0	0.0%
			Important	My Organization	0	0.0%
			Very important	My Organization	0	0.0%
			No Answer	My Organization	51	
	When you drink alcoholic beverages, how important to you is each of the following reasons?	To feel comfortable pursuing an opportunity to have sex	Not important	My Organization	6	66.7%
			Mostly not important	My Organization	2	22.2%
			Neutral	My Organization	1	11.1%
Important			My Organization	0	0.0%	
Very important			My Organization	0	0.0%	
		No Answer	My Organization	51		

# AlcoholEdu

MGA Student Results of the Pre-course and Post-course Surveys for AY2023-2024

Views and Behavior with Alcohol & Drugs



## Post-course Survey Results

### Post-Course Survey Results -1

#### Survey Question Details

\*Survey response data with fewer than 20 learners is hidden to preserve anonymity.

Survey Details	Section	Question	Answer	Benchmark	Responses	% of Responses
<input type="checkbox"/> Course: AlcoholEdu for College  <input type="checkbox"/> Survey: AlcoholEdu for College Post-Course Survey	any of the ...		<input type="checkbox"/> No Answer	My Organization	3	
	<input type="checkbox"/> Current Situation	<input type="checkbox"/> Select the answer that most closely matches how you feel.	<input type="checkbox"/> I see no need to change the way I drink alcohol.	My Organization	32	78.0%
			<input type="checkbox"/> I am thinking about drinking alcohol in a healthier and safer way.	My Organization	5	12.2%
			<input type="checkbox"/> I am ready to try drinking alcohol in a healthier and safer way.	My Organization	2	4.9%
			<input type="checkbox"/> I am currently trying to drink alcohol in a healthier and safer way.	My Organization	2	4.9%
	<input type="checkbox"/> During the next 30 days to what degree do you plan to...?	<input type="checkbox"/> Reduce the number of times you drink per week	<input type="checkbox"/> No Answer	My Organization	3	
			<input type="checkbox"/> Never	My Organization	11	27.5%
			<input type="checkbox"/> Infrequently	My Organization	0	0.0%
			<input type="checkbox"/> Sometimes	My Organization	9	22.5%
			<input type="checkbox"/> Frequently	My Organization	3	7.5%
			<input type="checkbox"/> Always	My Organization	17	42.5%
	<input type="checkbox"/> During the next 30 days to what degree do you plan to...?	<input type="checkbox"/> Reduce the number of drinks you have each time you drink	<input type="checkbox"/> No Answer	My Organization	4	
<input type="checkbox"/> Never			My Organization	12	30.8%	
<input type="checkbox"/> Infrequently			My Organization	0	0.0%	
<input type="checkbox"/> Sometimes			My Organization	7	17.9%	
<input type="checkbox"/> Frequently			My Organization	3	7.7%	
<input type="checkbox"/> Always			My Organization	17	43.6%	
Survey Details	Section	Question	Answer	Benchmark	Responses	% of Responses
	<input type="checkbox"/> During the next 30 days to what degree do you plan to...?	<input type="checkbox"/> Pace your drinks to 1 or fewer per hour	<input type="checkbox"/> Never	My Organization	9	22.5%
			<input type="checkbox"/> Infrequently	My Organization	0	0.0%
			<input type="checkbox"/> Sometimes	My Organization	4	10.0%
			<input type="checkbox"/> Frequently	My Organization	6	15.0%
			<input type="checkbox"/> Always	My Organization	21	52.5%
			<input type="checkbox"/> No Answer	My Organization	4	
	<input type="checkbox"/> During the next 30 days to what degree do you plan to...?	<input type="checkbox"/> Set a limit on how many drinks you'll have	<input type="checkbox"/> Never	My Organization	10	25.0%
			<input type="checkbox"/> Infrequently	My Organization	0	0.0%
			<input type="checkbox"/> Sometimes	My Organization	5	12.5%
			<input type="checkbox"/> Frequently	My Organization	5	12.5%
			<input type="checkbox"/> Always	My Organization	20	50.0%
			<input type="checkbox"/> No Answer	My Organization	4	
<input type="checkbox"/> During the next 30 days to what degree do you plan to...?	<input type="checkbox"/> Alternate non-alcoholic beverages with alcoholic drinks	<input type="checkbox"/> Never	My Organization	10	24.4%	
		<input type="checkbox"/> Infrequently	My Organization	1	2.4%	
		<input type="checkbox"/> Sometimes	My Organization	6	14.6%	
		<input type="checkbox"/> Frequently	My Organization	4	9.8%	
		<input type="checkbox"/> Always	My Organization	20	48.8%	
		<input type="checkbox"/> No Answer	My Organization	3		

# AlcoholEdu

MGA Student Results of the Pre-course and Post-course Surveys for AY2023-2024

Views and Behavior with Alcohol & Drugs



## Post-Course Survey Results -2

### Survey Question Details

\*Survey response data with fewer than 20 learners is hidden to preserve anonymity.

Survey Details	Section	Question	Answer	Benchmark	Responses	% of Responses
	Please indicate your level of agreement with the following statements:	Most students at my school would intervene if they witnessed someone being harassed by another intoxicated individual or group.	Strongly disagree	My Organization	2	4.7%
			Disagree	My Organization	2	4.7%
			Neutral	My Organization	21	48.8%
			Agree	My Organization	14	32.6%
			Strongly agree	My Organization	4	9.3%
	During the next 30 days to what degree do you plan to...?	Reach out and offer support to a friend or peer who may have a problem with drugs or alcohol	No Answer	My Organization	1	
			Never	My Organization	5	12.5%
			Infrequently	My Organization	1	2.5%
			Sometimes	My Organization	8	20.0%
			Frequently	My Organization	6	15.0%
	Please indicate your level of agreement with the following statements:	Most students at my school consume alcohol on a regular basis.	Always	My Organization	20	50.0%
			No Answer	My Organization	4	
			Strongly disagree	My Organization	3	7.0%
			Disagree	My Organization	4	9.3%
			Neutral	My Organization	30	69.8%
			Agree	My Organization	4	9.3%
			Strongly agree	My Organization	2	4.7%
			No Answer	My Organization	1	

Survey Details	Section	Question	Answer	Benchmark	Responses	% of Responses
	Please indicate your level of agreement with the following statements:	I would intervene if I witnessed someone being harassed by another intoxicated individual or group.	Strongly disagree	My Organization	0	0.0%
			Disagree	My Organization	0	0.0%
			Neutral	My Organization	15	34.9%
			Agree	My Organization	16	37.2%
			Strongly agree	My Organization	12	27.9%
	Please indicate your level of agreement with the following statements:	I believe that misuse and abuse of alcohol is a problem at my school.	No Answer	My Organization	1	
			Strongly disagree	My Organization	4	9.3%
			Disagree	My Organization	9	20.9%
			Neutral	My Organization	25	58.1%
			Agree	My Organization	2	4.7%
	Please indicate your level of agreement with the following statements:	I am aware of support resources at my school for students who are struggling with substance abuse or misuse.	Strongly agree	My Organization	3	7.0%
			No Answer	My Organization	1	
			Strongly disagree	My Organization	0	0.0%
			Disagree	My Organization	3	7.1%
			Neutral	My Organization	14	33.3%
			Agree	My Organization	13	31.0%
			Strongly agree	My Organization	12	28.6%
			No Answer	My Organization	2	

# AlcoholEdu

MGA Student Results of the Pre-course and Post-course Surveys for AY2023-2024

Views and Behavior with Alcohol & Drugs



## Post-Course Survey Results -3

### Survey Question Details

\*Survey response data with fewer than 20 learners is hidden to preserve anonymity.

Survey Details	Section	Question	Answer	Benchmark	Responses	% of Responses
	Please indicate your level of agreement with the following statements:	As a result of taking this course, I am confident in my ability to recognize an alcohol overdose.	Strongly disagree	My Organization	0	0.0%
			Disagree	My Organization	0	0.0%
			Neutral	My Organization	8	18.6%
			Agree	My Organization	20	46.5%
			Strongly Agree	My Organization	15	34.9%
	Please indicate your level of agreement with the following statements:	I feel that my school's academic climate is negatively impacted by alcohol.	Strongly disagree	My Organization	5	11.6%
			Disagree	My Organization	13	30.2%
			Neutral	My Organization	19	44.2%
			Agree	My Organization	5	11.6%
			Strongly agree	My Organization	1	2.3%
		The course taught me how to help someone who may have alcohol poisoning.	Strongly disagree	My Organization	0	0.0%
			Disagree	My Organization	1	2.3%
			Neutral	My Organization	8	18.6%
			Agree	My Organization	21	48.8%
			Strongly Agree	My Organization	13	30.2%
	Please indicate your level of agreement with the following statements:	I feel that my personal academic experience is negatively impacted by others' alcohol use.	Strongly disagree	My Organization	10	23.3%
			Disagree	My Organization	14	32.6%
			Neutral	My Organization	15	34.9%
			Agree	My Organization	2	4.7%
			Strongly agree	My Organization	2	4.7%
	Please indicate your level of agreement with the following statements:	The course taught me how to make a plan ahead of time to make responsible decisions about drinking.	Strongly disagree	My Organization	0	0.0%
			Disagree	My Organization	1	2.3%
			Neutral	My Organization	8	18.6%
			Agree	My Organization	19	44.2%
			Strongly Agree	My Organization	15	34.9%
		As a result of taking this course, I am confident in my ability to help someone who may be experiencing an overdose.	Strongly disagree	My Organization	0	0.0%
			Disagree	My Organization	0	0.0%
			Neutral	My Organization	11	25.6%
			Agree	My Organization	18	41.9%
			Strongly Agree	My Organization	14	32.6%
			No Answer	My Organization	1	

# AlcoholEdu

MGA Student Results of the Pre-course and Post-course Surveys for AY2023-2024

Views and Behavior with Alcohol & Drugs



## Post-Course Survey Results -4

### Survey Question Details

\*Survey response data with fewer than 20 learners is hidden to preserve anonymity.

Survey Details	Section	Question	Answer	Benchmark	Responses	% of Responses
		<input type="checkbox"/> I feel that the university does a great deal to prevent the misuse and abuse of alcohol and other drugs.	<input type="checkbox"/> Strongly disagree	My Organization	2	4.7%
			<input type="checkbox"/> Disagree	My Organization	4	9.3%
			<input type="checkbox"/> Neutral	My Organization	13	30.2%
			<input type="checkbox"/> Agree	My Organization	16	37.2%
			<input type="checkbox"/> Strongly agree	My Organization	8	18.6%
			<input type="checkbox"/> No Answer	My Organization	1	
	<input type="checkbox"/> Please indicate your level of agreement with the following statements:	<input type="checkbox"/> As a result of taking this course, I am more likely to refrain from sexual activity if a potential partner has been drinking.	<input type="checkbox"/> Strongly disagree	My Organization	0	0.0%
			<input type="checkbox"/> Disagree	My Organization	1	2.3%
			<input type="checkbox"/> Neutral	My Organization	9	20.9%
			<input type="checkbox"/> Agree	My Organization	13	30.2%
			<input type="checkbox"/> Strongly Agree	My Organization	20	46.5%
			<input type="checkbox"/> No Answer	My Organization	1	
		<input type="checkbox"/> I feel that my school provides a safe and supportive environment for students who are in recovery from an alcohol or other substance use disorder (addiction).	<input type="checkbox"/> Strongly disagree	My Organization	1	2.3%
			<input type="checkbox"/> Disagree	My Organization	2	4.7%
			<input type="checkbox"/> Neutral	My Organization	18	41.9%
			<input type="checkbox"/> Agree	My Organization	16	37.2%
			<input type="checkbox"/> Strongly agree	My Organization	6	14.0%
			<input type="checkbox"/> No Answer	My Organization	1	

Survey Details	Section	Question	Answer	Benchmark	Responses	% of Responses
	<input type="checkbox"/> Please indicate your level of agreement with the following statements:	<input type="checkbox"/> This course increased my confidence in reaching out and offering support to a friend or peer who I think may have a problem with drugs or alcohol.	<input type="checkbox"/> Strongly disagree	My Organization	1	2.3%
			<input type="checkbox"/> Disagree	My Organization	0	0.0%
			<input type="checkbox"/> Neutral	My Organization	12	27.9%
			<input type="checkbox"/> Agree	My Organization	16	37.2%
			<input type="checkbox"/> Strongly Agree	My Organization	14	32.6%
			<input type="checkbox"/> No Answer	My Organization	1	
	<input type="checkbox"/> Please indicate your level of agreement with the following statements:	<input type="checkbox"/> Being impaired by a substance is not an excuse for behavior that is illegal, harms, and/or negatively impacts others.	<input type="checkbox"/> Strongly disagree	My Organization	0	0.0%
			<input type="checkbox"/> Disagree	My Organization	1	2.3%
			<input type="checkbox"/> Neutral	My Organization	6	14.0%
			<input type="checkbox"/> Agree	My Organization	14	32.6%
			<input type="checkbox"/> Strongly agree	My Organization	22	51.2%
			<input type="checkbox"/> No Answer	My Organization	1	
	<input type="checkbox"/> As a result of taking AlcoholEdu,...	<input type="checkbox"/> How much do you think your drinking-related behavior will change?	<input type="checkbox"/> Not at all	My Organization	14	33.3%
			<input type="checkbox"/> A little bit	My Organization	4	9.5%
			<input type="checkbox"/> Somewhat	My Organization	10	23.8%
			<input type="checkbox"/> Very much	My Organization	5	11.9%
			<input type="checkbox"/> Completely	My Organization	9	21.4%
			<input type="checkbox"/> No Answer	My Organization	2	

# AlcoholEdu

MGA Student Results of the Pre-course and Post-course Surveys for AY2023-2024

Views and Behavior with Alcohol & Drugs



## Post-Course Survey Results -5

### Survey Question Details

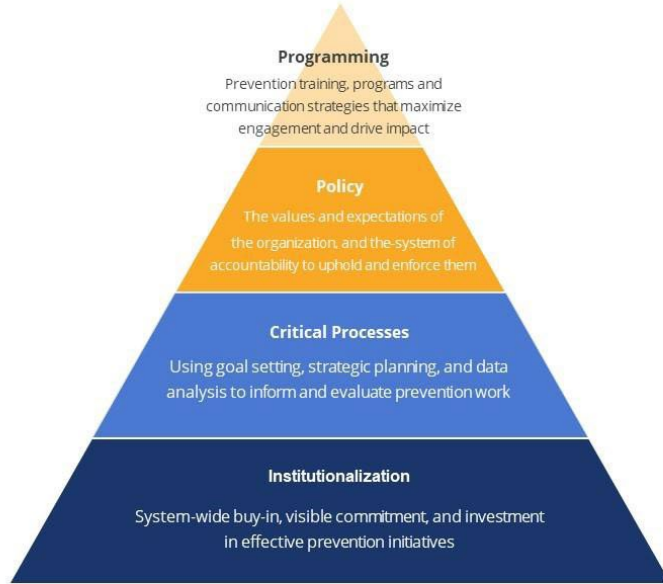
\*Survey response data with fewer than 20 learners is hidden to preserve anonymity.

Survey Details	Section	Question	Answer	Benchmark	Responses	% of Responses
	Please indicate your level of agreement with the following statements:	This course affected my own decision not to drink or use other drugs.	<input type="checkbox"/> No Answer		4	9.3%
			<input type="checkbox"/> Strongly disagree	My Organization	1	2.3%
			<input type="checkbox"/> Disagree	My Organization	13	30.2%
			<input type="checkbox"/> Neutral	My Organization	11	25.6%
			<input type="checkbox"/> Agree	My Organization	14	32.6%
			<input type="checkbox"/> Strongly Agree	My Organization	1	
	Please indicate your level of agreement with the following statements:	I can be more certain whether my partner is consenting to sexual activity if we are both sober.	<input type="checkbox"/> No Answer		0	0.0%
			<input type="checkbox"/> Strongly disagree	My Organization	0	0.0%
			<input type="checkbox"/> Disagree	My Organization	5	11.6%
			<input type="checkbox"/> Neutral	My Organization	10	23.3%
			<input type="checkbox"/> Agree	My Organization	28	65.1%
			<input type="checkbox"/> Strongly agree	My Organization	1	
	As a result of taking AlcoholEdu,....?	How much have your perceptions of other students' drinking-related behaviors changed?	<input type="checkbox"/> No Answer		9	20.9%
			<input type="checkbox"/> Not at all	My Organization	2	4.7%
			<input type="checkbox"/> A little bit	My Organization	16	37.2%
			<input type="checkbox"/> Somewhat	My Organization	9	20.9%
			<input type="checkbox"/> Very much	My Organization	7	16.3%
			<input type="checkbox"/> Completely	My Organization	1	
	Please indicate your level of agreement with the following statements:	This course affected my ability to support a decision made by someone else not to drink or use other drugs.	<input type="checkbox"/> No Answer		2	4.7%
			<input type="checkbox"/> Strongly disagree	My Organization	1	2.3%
			<input type="checkbox"/> Disagree	My Organization	15	34.9%
			<input type="checkbox"/> Neutral	My Organization	12	27.9%
			<input type="checkbox"/> Agree	My Organization	13	30.2%
			<input type="checkbox"/> Strongly Agree	My Organization	1	
	Course Feedback	What did you like best about this course?	<input type="checkbox"/> No Answer		14	
			<input type="checkbox"/> User Input	My Organization		
	Course Feedback	What could we do to improve this course?	<input type="checkbox"/> No Answer		15	
			<input type="checkbox"/> User Input	My Organization		



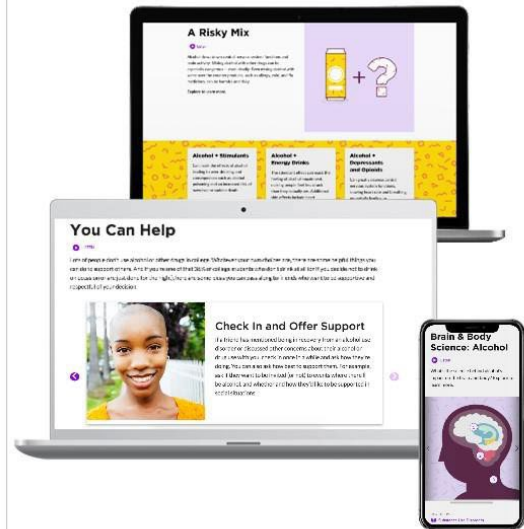
## The Prevention Framework

The Prevention Framework, developed by Vector Solutions' Campus Prevention Network, defines the elements of a comprehensive approach to prevention, and the ways in which those elements build to an effective prevention program.



## About AlcoholEdu for College

The Benefits of Working with Vector Solutions	AlcoholEdu for College
<p><b>Proven Efficacy</b> Nine independent studies have been published demonstrating the efficacy of Vector's online programs in improving knowledge, attitudes, and behaviors.</p>	<p><b>Developed in Collaboration</b> with leading prevention experts and researchers.</p>
<p><b>True Expertise</b> Our team includes public health professionals, administrators from student affairs, campus prevention offices, legal experts, and more. Extend your team by partnering with ours.</p>	<p><b>Interactive Content</b> guided by recommendations from the National Institute of Alcohol Abuse and Alcoholism (NIAAA).</p>
<p><b>Beyond Compliance</b> Our online programs are built by prevention and compliance experts to meet and exceed requirements from Title IX, Clery Act, and EDGAR part 86.</p>	<p><b>Informed by Emerging Research</b> on evidence-based practice (e.g., social norms approach, bystander intervention) and college student behavior.</p>
<p><b>Data Driven</b> Our data and analytics provide real-time access to attitudinal and behavioral data from your unique populations, and national benchmarks to assess needs and strengths.</p>	<p><b>Cited as a Top-tier Strategy by NIAAA</b> in their College Alcohol Intervention Matrix (AIM).</p>
	<p><b>Most Widely Used</b> universal online AOD prevention program since its development in 2000, with over 11M users to date.</p>



# AlcoholEdu for College Course Map

Part 1	<b>1. Getting Started</b> <ul style="list-style-type: none"> <li>• Introductory Video</li> <li>• Custom Welcome Letter</li> <li>• Custom Welcome Video</li> </ul>	<b>2. Standard Drink</b> <ul style="list-style-type: none"> <li>• Student Alcohol Knowledge Interviews</li> <li>• Pre-Assessment</li> <li>• Standard Drink Definition</li> <li>• Identifying Standard and Non-Standard Drinks</li> <li>• Pouring Standard Drinks</li> </ul>	Survey 1	<b>3. Where Do You Stand?</b> <ul style="list-style-type: none"> <li>• Risk Factors &amp; Choices</li> <li>• You Are Not Alone/Benefits of Not Drinking/Calories &amp; Cash/Support for Your Choice</li> <li>• Your Drinking Profile/ Your Peak BAC/Reducing Your BAC/Drinking Consequences/Calories &amp; Cash/Your Drinking Habits</li> </ul>	
	<b>4. Goal Setting</b> <ul style="list-style-type: none"> <li>• What's Important to You?</li> <li>• What Do You Want to Focus on this Year</li> <li>• My Choices</li> </ul>	<b>5. Drinking &amp; Motivation</b> <ul style="list-style-type: none"> <li>• What Do You Think?</li> <li>• Factors That Can Influence Decisions</li> <li>• Why/Why Not Drink? Poll</li> <li>• Expectancy Theory &amp; Advertising</li> <li>• Ads Appealing to Men/Women</li> <li>• Alcohol &amp; Advertising Poll</li> <li>• Write a Tagline</li> </ul>		<b>6. Brain &amp; Body</b> <ul style="list-style-type: none"> <li>• BAC Basics</li> <li>• What Factors Affect BAC</li> <li>• Risk/Protective Factors</li> <li>• BAC Calculator</li> <li>• Marijuana &amp; Drugs</li> <li>• Sexual Assault &amp; Understanding Consent</li> <li>• Brain &amp; Body Science</li> <li>• Biphasic Effect</li> <li>• A BAC Story</li> </ul>	<b>7. My Action Plan</b> <ul style="list-style-type: none"> <li>• Drinker/NonDrinker Plan</li> <li>• Choose Your Strategies</li> <li>• Activities on Campus</li> </ul>
	<b>8. Laws &amp; Policies</b> <ul style="list-style-type: none"> <li>• Alcohol Related Laws</li> <li>• Campus Policies</li> <li>• Drinking &amp; Driving</li> </ul>	<b>9. Helping Friends</b> <ul style="list-style-type: none"> <li>• Taking Care of Yourself &amp; Others</li> <li>• Alcohol Poisoning</li> <li>• Helping Your Friends Poll</li> <li>• Drinking &amp; Driving</li> <li>• Getting Help</li> </ul>	Survey 2 and Post-Assessment	INTERSESSION	
Part 2	<b>10. Introduction</b> <ul style="list-style-type: none"> <li>• Welcome Back</li> </ul>	Survey 3		<b>11. Recognizing Problems</b> <ul style="list-style-type: none"> <li>• Taking Care of Yourself &amp; Others – The Roommate</li> </ul>	<b>12. Course Conclusion</b> <ul style="list-style-type: none"> <li>• Summary of Key Topics</li> <li>• Review Goals, Choices and Plan</li> </ul>



## APPENDIX C

### Semesterly E-mail to Students

**From:** Brannon, Jennifer <jennifer.brannon@mga.edu>  
**Sent:** Wednesday, August 14, 2024 7:48 AM  
**To:** Student Distribution List <Students@mga.edu>  
**Cc:** InsideMGA <insidemga@mga.edu>  
**Subject:** Important Fall 2024 information

Hello Knights!

It's the first day of fall semester and we are glad you are here! The [Division of Student Affairs](#) is committed to helping you make the most of your experience at MGA by providing you with outstanding opportunities and programs. One of our main objectives is to provide you with a safe and secure learning environment. One of the ways to do that is by making you aware of policies designed to help you succeed as a Knight! These are in your [MGA Student Handbook](#) and on the [MGA website](#).

I would like to specifically draw your attention to the following items:

- MGA is an alcohol and other drugs-free campus. The [Alcohol and Drug Free Campus Policy](#) is in your student handbook, and it outlines the laws and penalties related to the unlawful use of any of these substances.
- MGA is also a [Tobacco Free campus](#) which includes vapes. Information for anyone who needs help to address issues of substance abuse or smoking cessation can do so through our [Counseling Services](#), our [Health Clinics](#), and through [BeWell@MGA](#).
- The [Sexual Harassment and Misconduct](#) policy includes information and steps to take if you or someone you know becomes a victim of sexual harassment or misconduct. Information can also be attained through our [Title IX](#) office.
- The required [annual report of campus crime statistics](#) is mentioned in the [handbook](#) and available online through [Campus Police](#).
- Students' responsibilities and rights related to alleged Code of Conduct violations are outlined in the [Student Code of Conduct](#) within the handbook.

In addition to these policies, the [student handbook](#) includes a great deal of other information as it is an important online resource for you to become familiar with and use throughout your time at MGA.

I hope you have a great first day and a terrific semester!

Go Knights!  
Jennifer Brannon

**Dr. Jennifer A. Brannon**  
**Vice President for Student Affairs**  
Student Affairs  
100 University Parkway, Macon, Georgia 31206  
O: 478.934.3028  
[jennifer.brannon@mga.edu](mailto:jennifer.brannon@mga.edu)

## APPENDIX D

### Middle Georgia State University 2023-2024 Part 86, Drug-Free Schools and Campuses Regulations Compliance Checklist

1. Does the institution maintain a copy of its drug prevention program? Yes  No   
If yes, where is it located? **Online**
  
2. Does the institution provide annually to each employee and each student who is taking one or more classes for any type of academic credit except for continuing education units, written materials that adequately describe and contain the following?
  - a. Standards of conduct that prohibit unlawful possession, use, or distribution of illicit drugs and alcohol on its property or as a part of its activities  
Students: Yes  No  Staff and Faculty: Yes  No
  
  - b. A description of the health risks associated with the use of illicit drugs and the abuse of alcohol  
Students: Yes  No  Staff and Faculty: Yes  No
  
  - c. A description of applicable legal sanctions under local, state, or federal law  
Students: Yes  No  Staff and Faculty: Yes  No
  
  - d. A description of applicable counseling, treatment, or rehabilitation or re-entry programs  
Students: Yes  No  Staff and Faculty: Yes  No
  
  - e. A clear statement of the disciplinary sanctions the institution will impose on students and employees, and a description of those sanctions  
Students: Yes  No  Staff and Faculty: Yes  No
  
3. Are the above materials distributed to students in one of the following ways?
  - a. Mailed to each student (separately or included in another mailing)  
Yes  No
  
  - b. Through campus post offices boxes  
Yes  No
  
  - c. Class schedules which are mailed to each student  
Yes  No
  
  - d. During freshman orientation  
Yes  No
  
  - e. During new student orientation  
Yes  No
  
  - f. In another manner (describe) **Online and through e-mail**

4. Does the means of distribution provide reasonable assurance that each student receives the materials annually? Yes **X** No
5. Does the institution's distribution plan make provisions for providing these materials to students who enroll at some date after the initial distribution? Yes **X** No
6. Are the above materials distributed to staff and faculty in one of the following ways?
- Mailed  
Staff: Yes  No **X** Faculty: Yes  No **X**
  - Through campus post office boxes  
Staff: Yes  No **X** Faculty: Yes  No **X**
  - During new employee orientation  
Staff: Yes **X** No  Faculty: Yes **X** No
  - In another manner (describe) **Online and through e-mail.**
7. Does the means of distribution provide reasonable assurance that each staff and faculty member receive the materials annually?  
Staff: Yes **X** No  Faculty: Yes **X** No
8. Does the institution's distribution plan make provisions for providing these materials to staff and faculty who are hired after the initial distribution?  
Staff: Yes **X** No  Faculty: Yes **X** No
9. In what ways does the institution conduct biennial reviews of its drug prevention program to determine effectiveness, implement necessary changes, and ensure that disciplinary sanctions are enforced?
- Conduct student alcohol and drug use survey  
Yes **X** No
  - Conduct opinion survey of its students, staff, and faculty  
Students: Yes **X** No  Staff and Faculty: Yes  No **X**
  - Evaluate comments obtained from a suggestion box  
Students: Yes  No **X** Staff and Faculty: Yes  No **X**
  - Conduct focus groups  
Students: Yes  No **X** Staff and Faculty: Yes  No **X**
  - Conduct intercept interviews  
Students: Yes  No **X** Staff and Faculty: Yes  No **X**
  - Assess effectiveness of documented mandatory drug treatment referrals for students and employees  
Students: Yes  No **X** Staff and Faculty: Yes  No **X**
  - Assess effectiveness of documented cases of disciplinary sanctions imposed on students and employees  
Students: Yes  No **X** Staff and Faculty: Yes  No **X**
  - Other (please list)

10. Who is responsible for conducting these biennial reviews? **Student Affairs leads a cross divisional committee to conduct the biennial review.**

11. If requested, has the institution made available, to the Secretary and the public, a copy of each requested item in the drug prevention program and the results of the biennial review?

Yes  No

12. Where is the biennial review documentation located?

Name: **Jennifer Brannon**  
Title: **Vice President for Student Affairs**  
Department **Division of Student Affairs**  
Phone: **478-934-3028**  
E-mail: **jennifer.brannon@mga.edu**

13. Comments