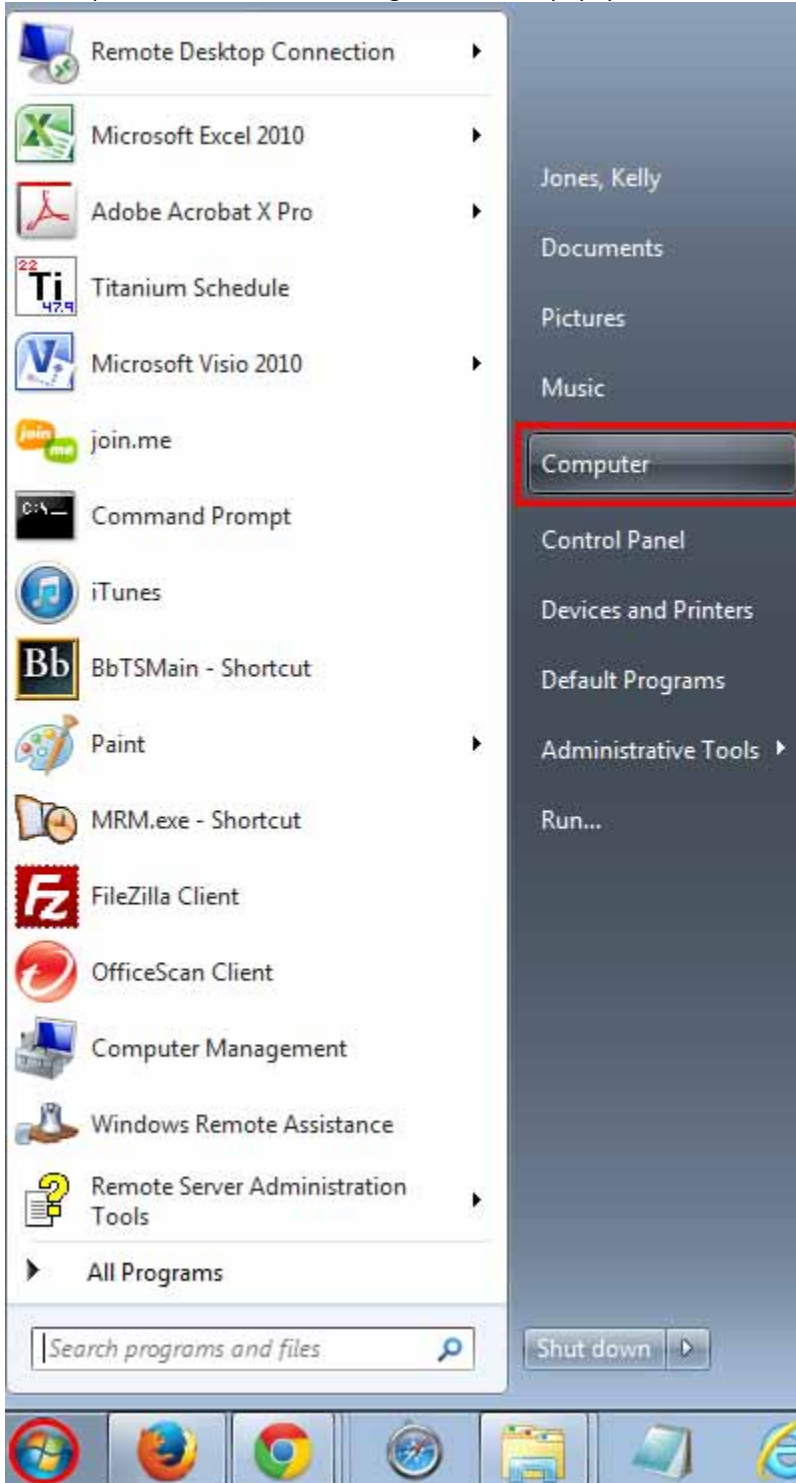


WINDOWS 7: Disconnecting and Re-mapping Instructions

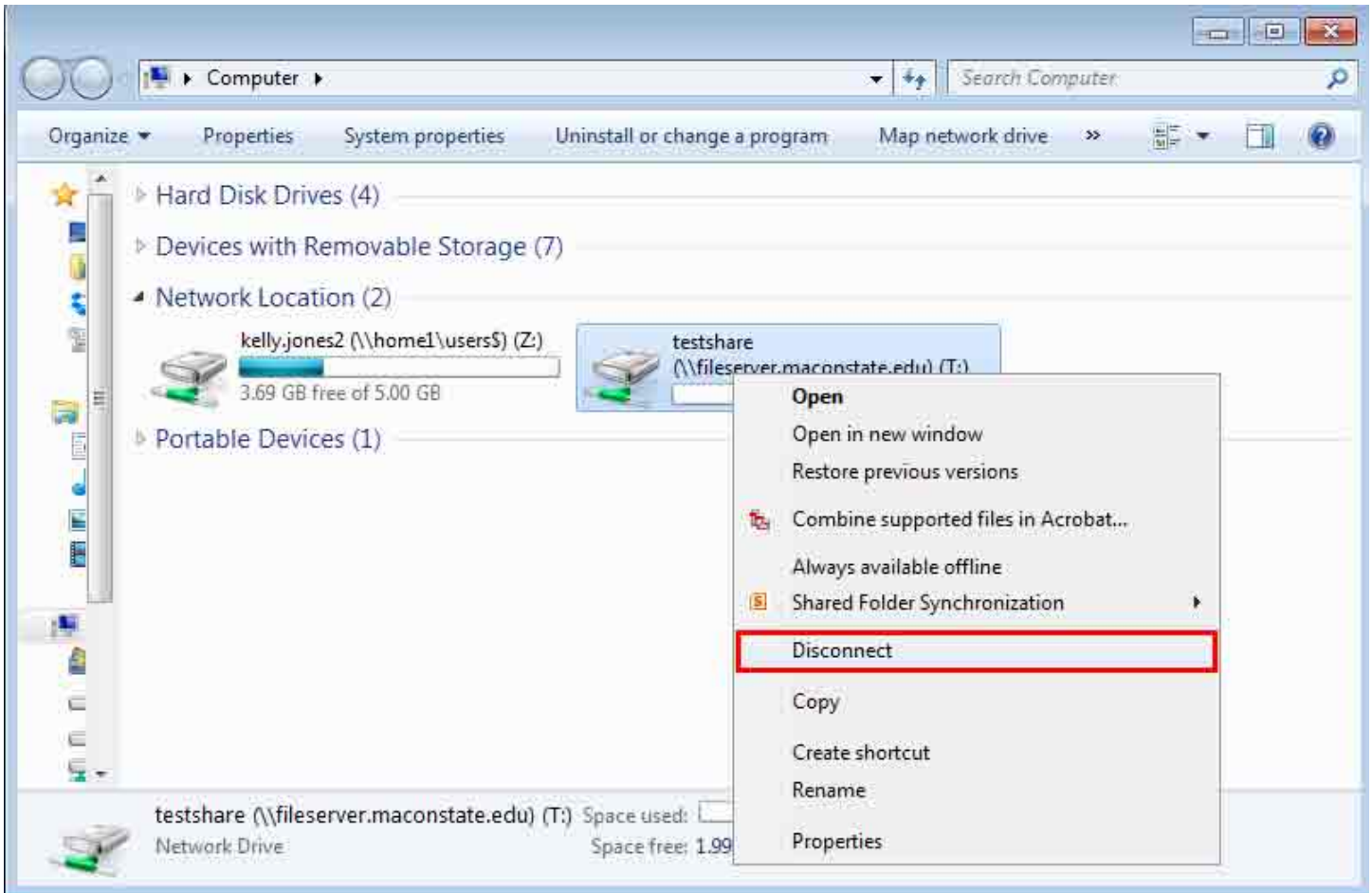
1. Click on the windows start button on the bottom left of your screen



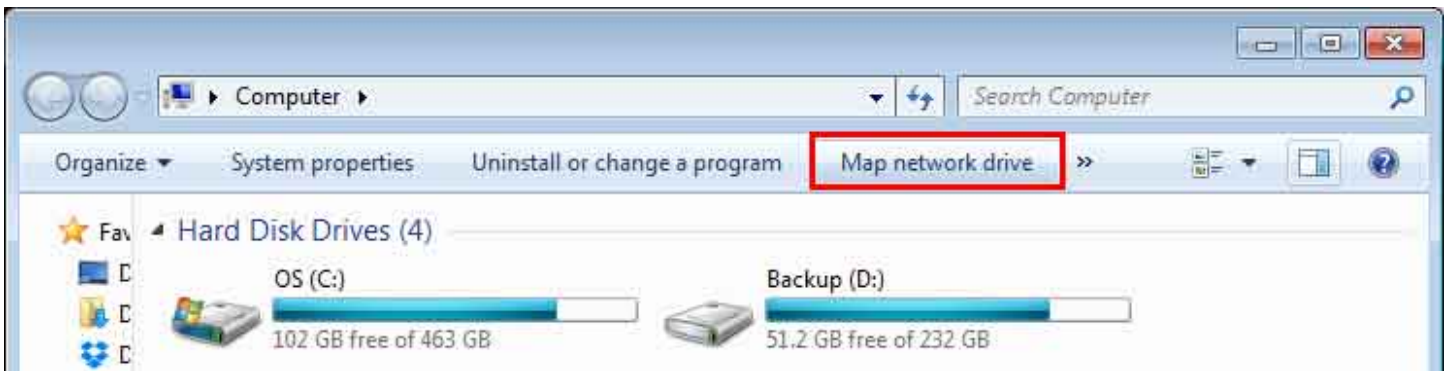
2. Choose Computer from the list on the right side of the popup screen



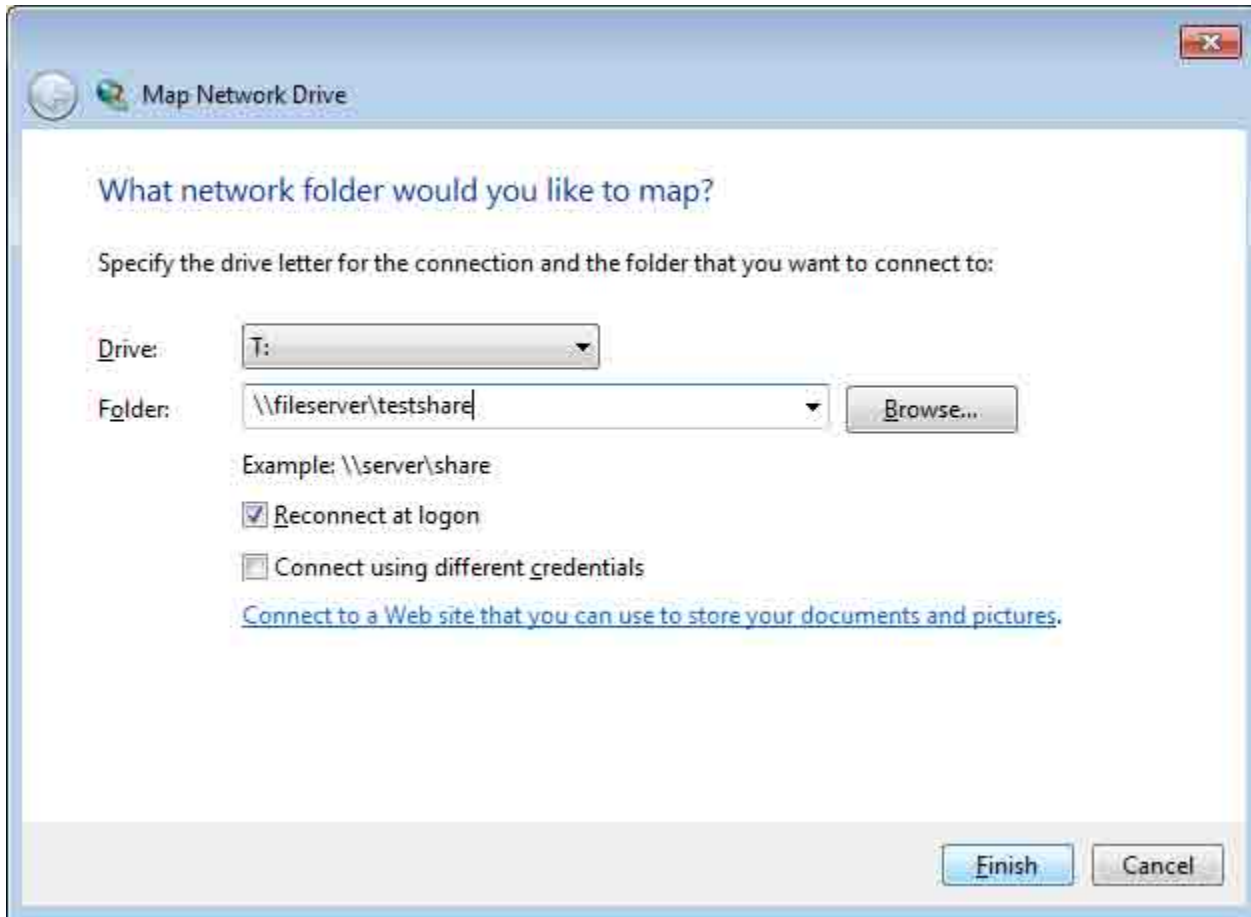
3. Under 'Network Locations', find all network drives that have .maconstate.edu in them.
 - a. Make note of the share name so you can reconnect to it later (in the below example testshare is the share name)
 - b. Right-click on the drives you would like to disconnect and click 'Disconnect'



4. Restart your machine.
5. Again go to Start -> Computer but this time choose "Map network drive" from the menu at the top of the new window



6. Choose a drive letter between G and X
7. Enter the folder name: \\fileserver\XXXXXXXXXXXX (whatever the share name is you're trying to map)
8. Make sure the Reconnect at logon checkbox is checked.



7. Click Finish